



# Multiplication and Division Word Problems

## Questions

1. Maria, a baker, makes 60 loaves of bread a week. How many loaves does she make in a year?
2. Which is larger?  
80 hundreds or Triple 2600
3. Jacob, a delivery driver, delivers 25 packages a day. He does this for each of the days of the week except for Sundays. How many packages does he deliver in a week?
4. If a pencil costs 5 cents, how much does a set of 12 cost?
5. A school has 600 students, and there are 25 students in each class. How many classes are there in the school?
6. There is a line of cars stuck in traffic. If there are 72 wheels, how many cars are in the line?
7. John earns \$8 per hour for a week of work. His colleague earns double that. How much do they earn together for the week?
8. Juan eats 90 pieces of fruits per month. What is the average number of fruits he eats per day?
9. What times what is 36?
10. There are the same number of toys in each box. If there are 80 toys in total and 4 boxes, how many toys are in each box?



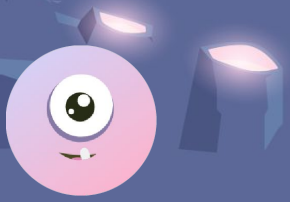


# Multiplication and Division Word Problems

## Answers

1. Maria makes 60 loaves/week \* 52 weeks/year = 3120 loaves/year
2. 80 hundreds =  $80 \times 100$   
 $80 \times 100 = 8000$   
Compared to  
Triple 2600 =  $3 \times 2600$   
 $3 \times 2600 = 7800$   
8000 is larger than 7800
3. 150 packages a week  
Jacob delivers 25 packages a day and he doesn't deliver on Sundays, so he delivers 25 packages/day \* 6 days/week = 150 packages a week.
4. If one pencil costs 5 cents and you have a set of 12 pencils, the total cost of the set of pencils is 5 cents/pencil \* 12 pencils = 60 cents
5. To find out how many classes are in the school, we divide the total number of students by the number of students per class. In this case, the school has 600 students and there are 25 students in each class, so we divide 600 by 25 to get the number of classes, which is 24 classes
6. To find out how many cars are in the line, we divide the total number of wheels by the number of wheels per car. In this case, there are 72 wheels, and each car has 4 wheels, so we divide 72 by 4 to get the number of cars in the line, which is 18 cars
7. To find out how much they earn together in a week, we add the amount of money that John earns in a week to the amount of money that his colleague earns in a week. John earns \$8 per hour and works 40 hours a week, so he earns  $\$8/\text{hour} \times 40 \text{ hours/week} = \$320/\text{week}$ . His colleague earns double that amount, which is  $\$8 \times 2 = \$16/\text{hour}$ , and he also works 40 hours a week, so he earns  $\$16/\text{hour} \times 40 \text{ hours/week} = \$640/\text{week}$ . Together they earn  $\$320/\text{week} + \$640/\text{week} = \$960/\text{week}$





# Multiplication and Division Word Problems

## Answers

8. To find the average number of fruits Juan eats per day, we have to divide the total number of fruits he eats per month by the number of days in a month.

In this case, Juan eats 90 fruits per month and there are 30 days in a month, so we divide 90 by 30 to get the average number of fruits he eats per day which is 3 fruits/day

9. From your times table, you can try multiplying the same numbers together until you get 36. For example.  $1 \times 1 = 1$ ,  $2 \times 2 = 4$ ,  $3 \times 3 = 6$ ,  $4 \times 4 = 16$ ,  $5 \times 5 = 25$  and  $6 \times 6 = 36$ .

10. To find out how many toys are in each box, we divide the total number of toys by the number of boxes.

In this case, there are 80 toys in total, and they are divided into 4 boxes, so we divide 80 by 4 to get the number of toys per box, which is 20 toys per box.

